

The Echo

April 2024



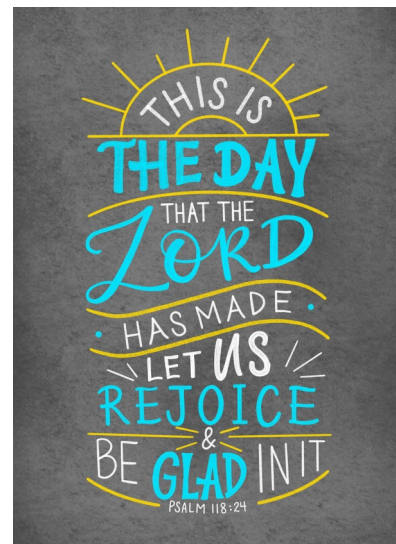
We just celebrated the risen Christ! We are resurrection people!

I hope you received this invitation last week so you know that Jesus Christ died for you and rose for you. God sent His Son, Jesus, into the world for YOU. During the season of Lent, you have been invited to put a piece of mosaic on a cross. Each bit is cut and colored differently reminding us of our own varied qualities. These qualities come from individual experiences, relationships, and choices. And like each of us, this composition of small pieces builds to compose a beautiful, functional whole. All of us together with love and desire, can form a beautiful mosaic cross and a harmonious future world. Of course, love is at the core, supporting and strengthening our relationships with God and each other. God's love is for everyone. He loves us all even though we are very different and He beckons each of us into a relationship with Him.

As we move from Easter Sunday into the next season of our lives, remember that we are all invited to walk with God in this journey of life. I hope you know that you are all welcome to worship and be part of our congregations. The door is open to all!

I leave you with an excerpt from Psalm 118. "O give thanks to the Lord, for he is good; his steadfast love endures forever! Let Israel say, 'His steadfast love endures forever.' The Lord is my strength and my might; he has become my salvation. There are glad songs of victory in the tents of the righteous: "The right hand of the Lord does valiantly; the right hand of the Lord is exalted; the right hand of the Lord does valiantly." I shall not die, but I shall live, and recount the deeds of the Lord. The Lord has punished me severely, but he did not give me over to death. Open to me the gates of righteousness, that I may enter through them and give thanks to the Lord. This is the gate of the Lord; the righteous shall enter through it. I thank you that you have answered me and have become my salvation. The stone that the builders rejected has become the chief cornerstone. This is the Lord's doing; it is marvelous in our eyes. This is the day that the Lord has made; let us rejoice and be glad in it." (Psalm 118:1-2, 14-24 NRSVUE).

God's peace to you, *Pastor Janelle*



Galchutt-Emmanuel Ministry Office: 701-553-8546

SAM Pastor Janelle Hansen: thegempastor@gmail.com; 701-205-6803

Admin. Assistant: emmanuelgalchutt@gmail.com; Cell 701-640-0321

Website: <http://galchuttemmanuel.weebly.com/>



Students performed a play at one of the Lenten services (above)



Four students participated in the First Communion classes in February and March. During the last session they created chalices and made communion bread. They received their First Communion on Maundy Thursday.



Confirmation starts up again on Wednesday, April 10, from 3:30-5 PM for 7th & 8th grade students.

9th grade confirmation students and mentors will meet at Our Saviors, and then they will head to Boulger Funeral Home in Fargo. It will be from 5:30 PM to 7 PM.

LWR News

On March 16, International Quilt Day, we had a fun time quilting and assembling Personal Care Kits for Lutheran World Relief. Six women from GEM and four young ladies cut fabric for quilts, sewed tops, painted blocks, and packed care kits. One of the girls, a first time sewer, quickly learned the needed skills and made her first two projects-children's quilts that will be donated to the YWCA. Four LWR quilts were completed and quilt kits assembled for anyone who wants to work on these at home, contributing in the efforts to help others around the world and locally. The ladies, girls, and one observing father enjoyed treats and lunch during the time together.

We expect to complete about 40 Personal Care Kits once all items are received and money donations are used to purchase articles in short supply. As of the date of this writing, the only item we are still needing is lightweight, dark-colored bath towels. There is a great need for these kits and quilts in many areas dealing with drought, famine, and conflicts at this time with no end in sight. Your contributions are greatly appreciated.

The next quilting day has not been set but watch the weekly e-updates for more information. All are welcome to join us at Emmanuel.

Ellen Rittenhouse



Love speaks through our actions.



God's Work, Our Hands



New Member Sunday

We are considering a New Member Sunday on April 21, 2024, and again in the fall if we have prospective members. If you or someone you know is interested in becoming a member of either Emmanuel Lutheran Church or Galchutt Lutheran Church, please contact Pastor Janelle at thegempastor@gmail.com for more information.



Bible Camp Info, Sunday, April 14

There have been inquiries from youth regarding attending a summer bible camp. Representatives from the Red Willow Bible Camp located near Binford, North Dakota, will be at both churches during worship services on April 14 to give an overview about the camps available. Red Willow Ministries was founded and has operated Red Willow Bible Camp since 1926,

making it one of the oldest continuously operated Lutheran Bible camps serving youth in the United States. There are several different options for different age levels and camps.

Superimposed love

Maybe you've heard how salvation is like a total solar eclipse: God doesn't see our sins because Jesus' holiness covers them completely. Or maybe you've heard how trials can cause an "eclipse of faith."

At WorldChallenge.org, Pastor Gary Wilkerson explains that in Greek, *eclipse* means "I am absent" or "I cease to exist," because people once thought the gods temporarily extinguished the sun. "For Christians, a 'spiritual eclipse' is a dark hour when God seems to be absent from our lives," Wilkerson writes.

Wilkerson points to Peter being sifted like wheat, Elijah and Jeremiah facing extreme discouragement, and David collapsing morally. Amid Satan's attacks, "God seems completely absent," writes the pastor. "In that dark moment of eclipse, the devil has created such chaos we can't possibly see a way out." During times of testing, Christians must cry out to God and trust his faithfulness.

Completing the eclipse analogy, Wilkerson shares Titus 3:4, the "love of God our Savior appeared" (NIV). The Greek meaning of *appeared* here is *superimposed*, he writes. God looks on our fraught-filled times of eclipse and "superimposes his divine love over us."





Emmanuel Lutheran Council Highlights

The Emmanuel Lutheran Church council met on Tuesday, March 12, 2024. Members present were Pastor Janelle, Lou Ann Lee, Tessa Tschakert, Sharon Tschakert and Julie Lehman. Pastor Janelle opened the meeting with devotions and a prayer.

SECRETARY'S REPORT: The minutes from last month's meeting was read by Julie.

Motion to approve by LouAnn with second by Tessa, all approved.

TREASURER'S REPORT: Propane tank was filled. A donation of \$1,000.00 was received from a former member for the general fund. We also received donations from returns of raffle prizes by winners.

Lou Ann reported on the Thrivent investment. Motion to approve by Tessa with second by Sharon. All approved.

PASTOR'S REPORT: Pastor Janelle reported 742 miles for mileage in February. Did several hospital and home visits. First Communion class was February 28 at Galchutt for four children. Maundy Thursday, March 28, is at Galchutt Church at 7:00 PM. Good Friday service is at Emmanuel Church at 7:00 PM. There were 17 skaters at the skating event. Pastor Janelle had a great vacation! LouAnn made a motion to approve Pastor Janelle's mileage, seconded by Tessa. All approved.

COMMITTEE REPORTS: Stewardship: We will be sending out postcards to remind everyone of upcoming events. There will be a craft table set up for the children and a "dinner church" with potluck on Palm Sunday, March 24th. Easter Sunday, March 31, there will be an Easter Egg hunt with prizes and candy for everyone! On Sunday, April 28, we will have Pizza and Bingo right after church with prizes. On May 5, May Day baskets again will be handed out to the community with a potluck dinner at the church. On Sunday, May 19, weather permitting, we will have an outdoor "dinner church" with a scavenger hunt for the children.

EDUCATION: Nothing reported.

WORSHIP: Nothing reported.

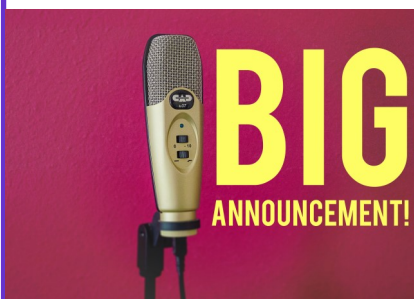
OLD BUSINESS: Nothing reported.

NEW BUSINESS: Planning a fundraiser for a new audio system for the church. Will get 2 to 3 bids for this project. Discussed moving the TV from upstairs to downstairs for events like dinner church, weddings, and funerals. We also discussed reviewing the previous fee agreement for weddings and use of the church by non-members of the church.

PROPERTY: Nothing reported.

Next Council meeting will be held on Tuesday April 9, at 7:00. We closed with The Lord's Prayer led by Pastor Janelle. Motion to adjourn meeting by LouAnn and seconded by Tessa. All approved.

Julie Lehman, Secretary



The Emmanuel Church council has discussed updating our audio sound system for several years and have now decided to start a fund designated to replace the outdated audio sound system in the church. The current system was purchased in 2002 and only works in part of the sanctuary and nowhere else in the church. Members have struggled for years hearing the speakers. We will start securing bids in April so at this point do not know exactly what it will cost but anticipate it being between \$15,000 - \$20,000 based on new systems recently installed in neighboring churches. If you wish to make a donation to this fund, please designate it as Sound System Fund. Thank you!



Kyle Krump *
David Fixen
Scott Fixen
Alan Muhs
James Overby
Alexandra Paczkowski
Larry Wold

Galchutt Lutheran Council Highlights

The Galchutt church council met on March 19, 2024. Members present were Pastor Janelle, David Fixen, Scott Fixen, Larry Wold, Alex Paczkowski, Jim Overby, and Al Muhs. Vice President Al called the meeting to order. Pastor Janelle led with a devotion and a prayer. Alex read the February meeting minutes. David approved minutes and Scott seconded. There was no treasury report.

Pastor's report: Pastor Janelle reported 742 miles. She visited the few members in the hospital, the homebound, and the nursing home members. The first communion class was held and there will a second class on March 20 where the students will be making the bread and painting their chalice. There are 4 students currently that will receive first communion during Maundy Thursday service on March 28. On February 25th 17 skaters attended skating at Skate City for an afternoon of fun.

Old Business: Kyle will work with Craig on getting the executive committee organized. Al will work on finding someone to look at the church shingles. Scott replaced the lights in the church with LED lights.

New Business: The council approved any future Sunday School Outings will be paid by church funds. There will be a Bingo & Pizza event held at Emmanuel on Sunday April 28 from 11:30 AM - 1:30 PM. A second lock-in will be held at Emmanuel on April 26 from 7 PM-7 AM. Pastor Janelle will be attending an intern retreat with Pastor Jule from April 8 - 10 in Minnesota. April 21 will be new member Sunday at Galchutt. Trees and branches need to be picked up, Scott will be communicating when the date will be. Council will look at the inside of St. John's church early this summer to get it cleaned up.

The next meeting was scheduled for April 17 at 7 PM. Meeting adjourned with the Lord's Prayer.

Alex Paczkowski-Secretary

When it rains



The skeleton flower, a perennial native to Japan, has delicate petals that change from opaque white to almost transparent when wet. After it rains, only the

flower's intricate, skeleton-like veins are visible.

When the rains come (and they will!) in our lives, the same can be said. Amid difficulty and struggle, our true selves often become more transparent. During a parenting challenge, criticism might emerge. Or while we tackle a tough work project, impatience might rear its ugly head.

Hosea 6:3 (NLT) proclaims: "Oh, that we might know the Lord! Let us press on to know him. He will respond to us as surely as the arrival of dawn or the coming of rains in early spring." The rains will come. Whether you're experiencing light rain or a downpour, ponder what the water reveals. Then ask God how you can be more open to his work in that area. *-from Newsletternewsletter.com*

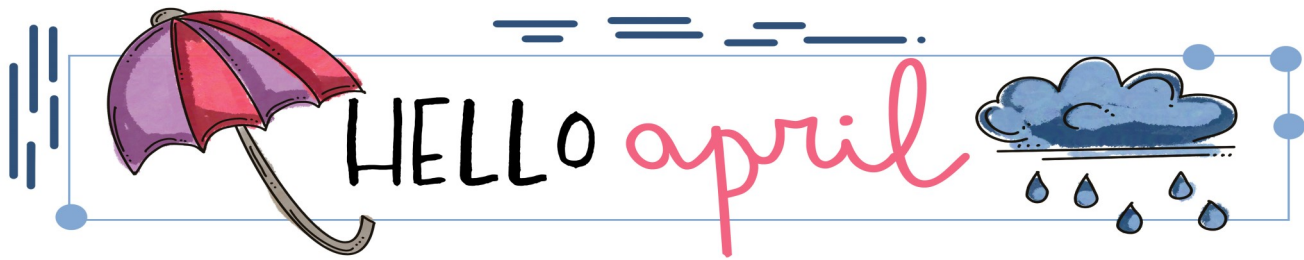
Liturgical Colors - What do they mean?


In the Christian tradition, colors are used for vestments and paraments, but a unified system of colors developed only gradually and haphazardly until and through the Middle Ages. Today, the Evangelical Lutheran Church in America provides a system of colors for use by its congregations; for the most part, the same system is also used by Roman and Anglican churches, at least in the United States; . . . The colors serve to adorn the worship space, and to call attention to the nature of the season or festival being celebrated.

As church seasons change, we will try to explain each color that you will see displayed in our churches.

WHITE. Symbolic of victory, joy, and purity this color is used for the seasons of Christmas and Easter; for Epiphany; all feasts of our Lord; for Trinity Sunday; for All Saints' Day; and for other feasts and festivals.

--blogs.elca.org/worship



Sun	Mon	Tue	Wed	Thu	Fri	Sat
	1	2	3	4	5	6
7 Noisy Offering 9AM Galchutt worship/ communion and SS 10:30AM Emmanuel worship/communion 4:30-6 PM Shower @ ELC for Tschakert/Heyen (see p.2)	8 Pastor Janelle gone to internship retreat	9 Pastor Janelle gone to internship retreat	10 Pastor Janelle gone to internship retreat 3:30-5 PM Confirmation at Our Saviors	11	12	13
14 9AM Galchutt worship followed with SS 9:30AM Emmanuel SS 10:30AM Emmanuel worship Book Group 2:30 PM	15 6 PM Internship Meeting at Galchutt	16 7 PM Emmanuel Council Mtg	17 3:30-5 PM Confirmation at Our Saviors 6 PM Galchutt Council Mtg	18	19	20
21 NEW MEMBER SUNDAY..... 9AM Galchutt worship/ communion followed with SS 9:30AM Emmanuel SS 10:30AM Emmanuel worship/communion	22	23	24 3:30-5 PM Confirmation at Our Saviors	25	26 Lock-In at Emmanuel for 5th-8th grade students, 7PM to 7 AM Sat.	27
28 9AM Galchutt worship followed with SS 9:30AM Emmanuel SS 10:30AM Emmanuel worship	29	30			Sharon Tschakert Emmanuel Altar Guild 	

Galchutt-Emmanuel Ministry Office: 701-553-8546

Synod Authorized Minister Janelle Hansen: cell 701-205-6803

GEM Administrative Assistant: emmanuelgalchutt@gmail.com; Cell 701-640-0321

Website: <http://galchuttemmanuel.weebly.com/>

Galchutt-Emmanuel Ministry

Emmanuel Lutheran Church
P. O. Box 119
Abercrombie, ND 58001

Galchutt Lutheran Church
105 Galchutt Avenue
Galchutt, ND 58075



This month's issue of *The Echo*
is sponsored by Mike and Twila Moen,
in loving memory of Edward, Lois,
and Steve Moen



ECHO SPONSORSHIP FORM

Thank you for supporting *The Echo*.
Sponsorships for September 2024 and
forward are available as of the date of this
publication. If you are interested in
sponsoring a future issue, please fill out the
form below and mail your check for \$100 to:
**Emmanuel Lutheran Church,
P. O. Box 119, Abercrombie, ND 58001.**

This Echo is sponsored by:

(in loving memory) **OR** (in honor of)

_____.

The *Echo* is published monthly for members and friends of
Galchutt-Emmanuel Ministry.
Newsletter Editor: Lou Ann Lee
Content Resources: Pastor, Ellen Rittenhouse, Linda Kuruc,
Kendra Dockter, and Council Secretaries, & our members
Copy Editor: Linda Kuruc
Production Assistant: Jan Rorvig

Just for Laughs.....



"It never fails...Every time I teach on
David and Goliath there're a few kids
who think they have license to
go home and pulverize their big brothers."